

FACT SHEET

Elliott Ditch Project Activities

Summer/Fall of 2019

Question or Comments, Call 24 hours a day (317) 613-4514 or e-mail at ElliottDitchQuestions@gmail.com

Background Information:

- Arconic Lafayette Operations (formerly Alcoa) submitted a work plan to the Indiana Department of Environmental Management (IDEM) and U.S. Environmental Protection Agency (U.S. EPA) Region 5 for review and approval of environmental cleanup activities for Elliott Ditch.
- Polychlorinated biphenyls (PCBs) were used widely by electrical utilities and manufacturing industries across the nation as coolants, lubricants, electrical fluids, and in fire retardant materials from the 1950s to the early 1970s. PCBs were valued for their insulating qualities and were considered an important tool in safeguarding employees and the public against fire risks.
- The Lafayette Operations used hydraulic oils containing PCBs and phased out these materials in the mid-1970s.
- Previous investigations conducted by the U.S. EPA and Arconic revealed historical PCB impacts to some overbank (soil) and sediment deposits in Elliott Ditch.
- The highest concentrations of PCBs, and widest extent of impacts in soil, were observed on the levee in Reach 1. Figure 1 has been attached depicting Reach 1 and the approximate extents of the levee.
- The work plan proposes the removal of PCB impacted soils from the levee, exceeding the cleanup objective of 1.0 mg/Kg, for offsite disposal at an appropriately permitted landfill.
- Arconic intends to implement future investigation and cleanup activities following the successful completion of the levee project, likely beginning in 2020, to address identified PCB impacts to soil and sediment within Elliott Ditch.

Next Steps:

- Arconic will host a public meeting on May 29, 2019, at 6:30pm at Courtyard by Marriott located at 150 Fairington Ave, Lafayette, Indiana 47905.
- The purpose of this public meeting is to present Elliott Ditch background information, discuss investigation work completed to date, provide an overview of the levee work plan, property access updates, and a tentative project schedule.

- A copy of the work plan can be viewed on the IDEM's Virtual File Cabinet (<https://vfc.idem.in.gov>, Document No. 82630193), or on the project record repository at <http://elliottditchproject.cecinc.com>.
- Public computer and internet access is available at the Tippecanoe County Public Library – Downtown Library located at 627 South Street, Lafayette, Indiana. This can be used to view project-related documents.
- Cleanup of the levee is scheduled to begin late summer, 2019.
- Arconic will be contacting residents and businesses to request permission to access their properties, and in some places, to access the ditch in support of the cleanup effort.
 - Property owners aiding in investigation and clean-up will be asked to sign a property access agreement.
 - Work undertaken related to the cleanup will be paid for by Arconic.
 - Following the completion of cleanup activities, private property will be restored to conditions equal to those observed prior to construction.

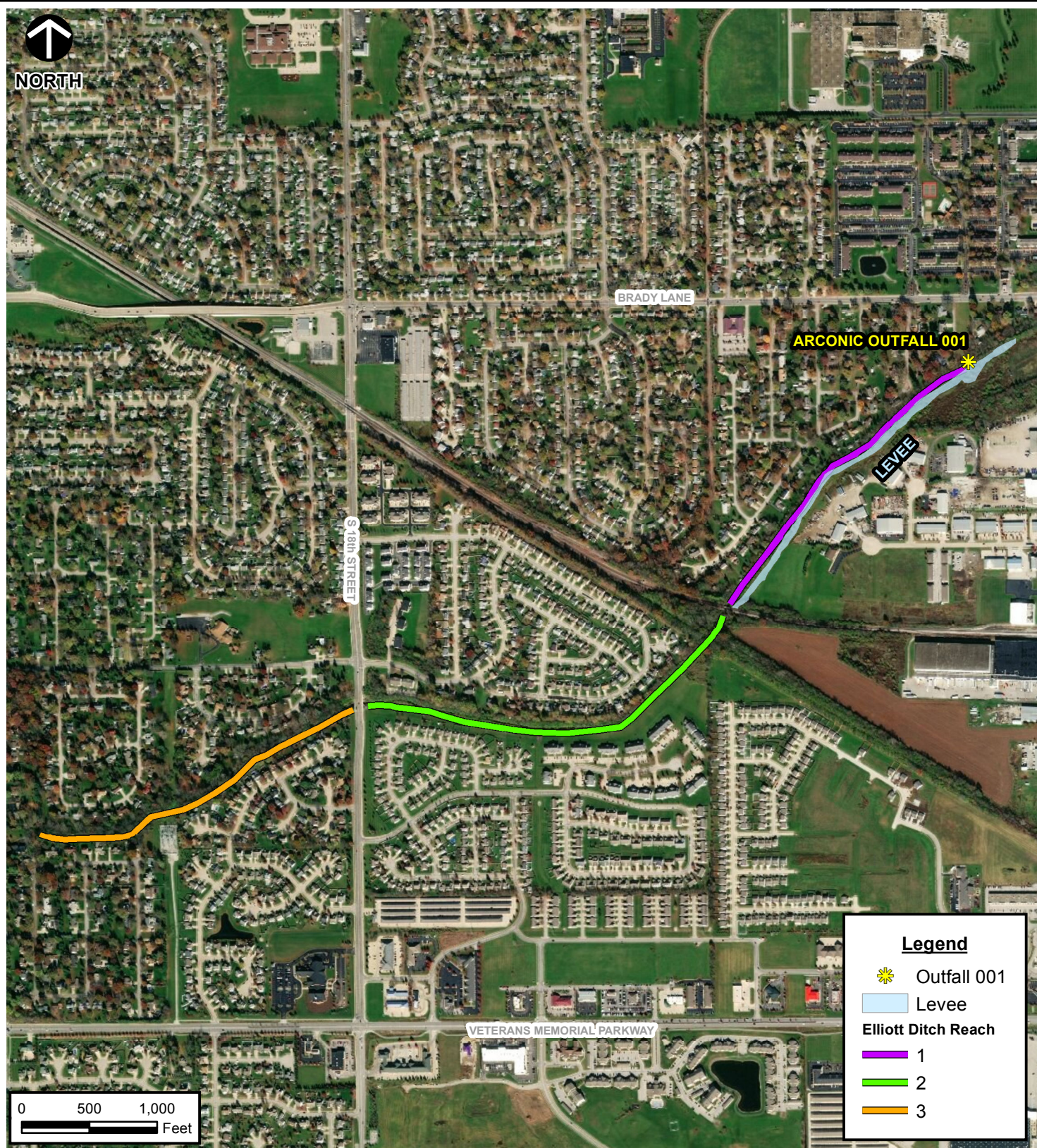
Environmental and Health Impacts:

Specific questions about health impacts of PCBs should be directed to the U.S. EPA or IDEM. For more information regarding PCBs, visit the Agency for Toxic Substances and Disease Registry's website at <https://www.atsdr.cdc.gov/toxfaqs/tf.asp?id=140&tid=26>.

Project Contact Information:

- The public may leave a message with their questions and concerns regarding investigations or cleanup activities at (317) 613-4514 or ElliottDitchQuestions@gmail.com.
- Regulatory contacts for the project are:
 - Mr. Donald Stilz, IDEM Project Manager, at (317) 232-3409 or dstilz@idem.IN.gov.
 - Ms. Jean Greensley, U.S. EPA Region 5 Project Manager, at (312) 353-1171 or greensley.jean@epa.gov.
- The news media may contact Tracie Gliozzi at Tracie.Gliozzi@arconic.com.
- Additional information is available on the project website <http://elliottditchproject.cecinc.com>.

P:\2017\172-367-GIS\Maps\172-367 Elliott Ditch Reaches1_3.mxd - 3/14/2019 - 5:09:23 PM (mbruck)



SOURCE: ESRI WORLD IMAGERY / ARCGIS MAP SERVICE: [HTTP://GOTO.ARCGISONLINE.COM/MAPS/WORLD_IMAGERY](http://GOTO.ARCGISONLINE.COM/MAPS/WORLD_IMAGERY). LAST ACCESSED: 3/14/2019
IMAGE DATE: 03/12/2011



Civil & Environmental Consultants, Inc.

2704 Cherokee Farm Way, Suite 101 Knoxville, TN 37920

865-977-9997 - 865-774-7767

www.cecinc.com

ARCONIC INC.
LAFAYETTE OPERATIONS
ELLIOTT DITCH REMEDIATION
LAFAYETTE, INDIANA

REACHES 1-3 & LEVEE LOCATION OVERVIEW

DRAWN BY:	DMM	CHECKED BY:	JMB	APPROVED BY:	TLM*	FIGURE NO:
DATE:	MARCH 14, 2019	DWG SCALE:	1" = 1,000'	PROJECT NO:	172-367.0011	1

Signature on File *