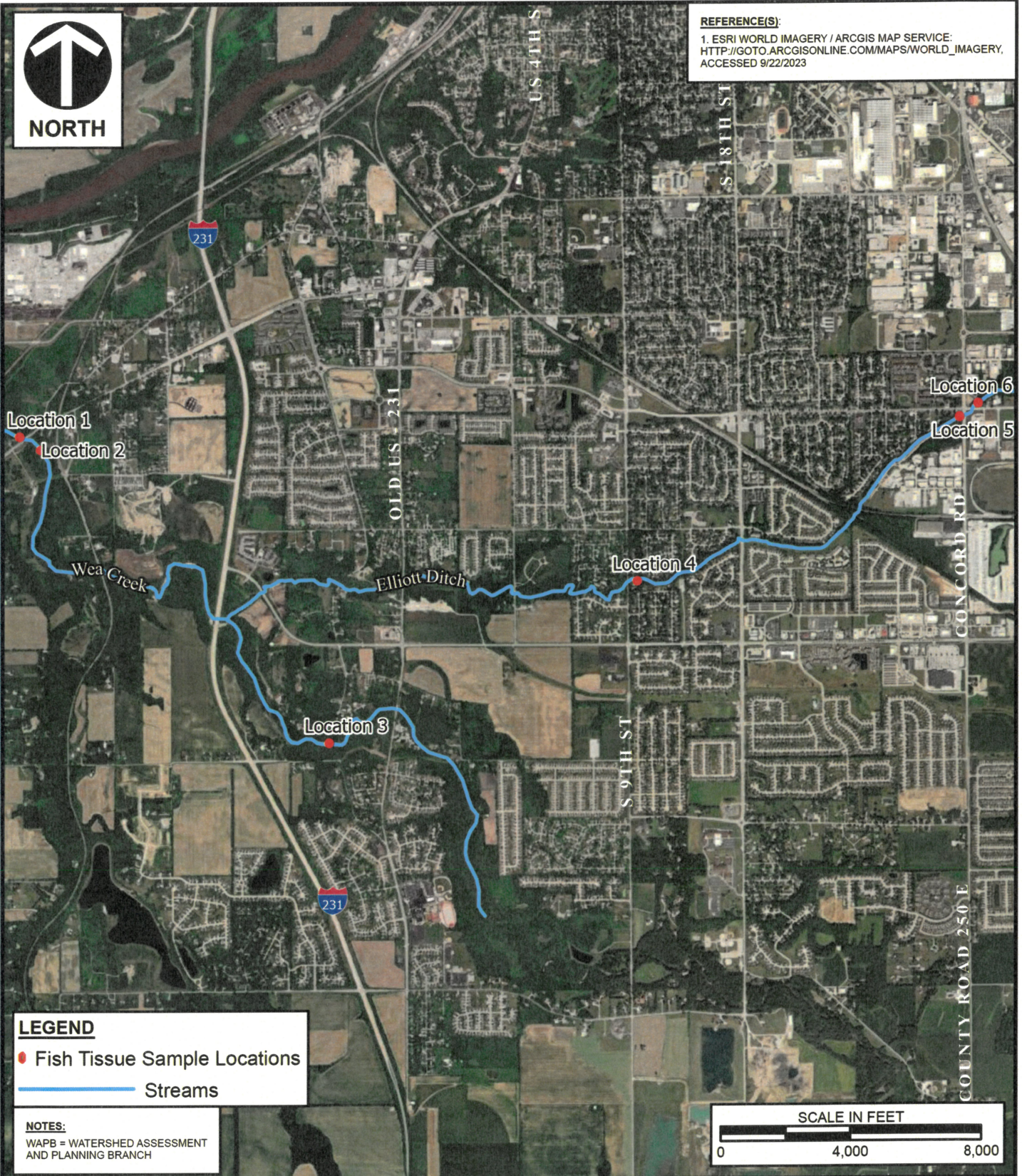




REFERENCE(S):

1. ESRI WORLD IMAGERY / ARCGIS MAP SERVICE:
HTTP://GOTO.ARCGISONLINE.COM/MAPS/WORLD_IMAGERY,
ACCESSED 9/22/2023



LEGEND

- Fish Tissue Sample Locations
- Streams

NOTES:

WAPB = WATERSHED ASSESSMENT
AND PLANNING BRANCH



Civil & Environmental Consultants, Inc.
2704 Cherokee Farm Way Suite 101 - Knoxville, TN 37920
865-977-9997
www.cecinc.com

ARCONIC US, LLC
ELLIOTT DITCH AND WEA CREEK
WAPB FISH TISSUE SAMPLING LOCATIONS
LAFAYETTE, INDIANA

FISH TISSUE SAMPLING LOCATIONS

DRAWN BY: OMH	CHECKED BY: GAW	APPROVED BY: JMB	FIGURE NO: 1
DATE: 9/21/2023	SCALE: 1"=4,000'	PROJECT NO: 315-052.0022	

P:\310-000\315-052-GIS\Maps\315-052\315-052.aprx 9/21/2023 3:56 PM (jwall)

*Hand Signature on file

**Elliott Ditch and Wea Creek, Lafayette, Indiana
Watershed Assessment and Planning Branch
Fish Tissue Sampling Results
Provided Results From 1983 - 2019**

Fish Sample	Sample Date	Latitude	Longitude	Fish	Length (mm)	Weight (g)								Total PCBs (ug/Kg)	
							Aroclor-1016 (ug/Kg)	Aroclor-1221 (ug/Kg)	Aroclor-1232 (ug/Kg)	Aroclor-1242 (ug/Kg)	Aroclor-1248 (ug/Kg)	Aroclor-1254 (ug/Kg)	Aroclor-1260 (ug/Kg)		
Location 1															
30900821	8/10/1993	40 22 50.0	-86 56 10.0	Northern Hog Sucker	277	206					536		2241	509	3300
30900822	8/10/1993	40 22 50.0	-86 56 10.0	Black Redhorse	370	486					521		1400	197	2100
30900823	8/10/1993	40 22 50.0	-86 56 10.0	White Sucker	394	660					513		1700	247	2500
Location 2															
AA25628-113-01	8/16/1983	40 22 46.0	-86 56 4.0	Northern Hog Sucker	303	326									18.6
995450001	10/6/1999	40 22 46.0	-86 56 4.0	River Chub	169	59	< -1	< -1	< -1	< -1	930	1000	220	2200	
995450002	10/6/1999	40 22 46.0	-86 56 4.0	Central Stoneroller	172	67	< -1	< -1	< -1	< -1	1800	1000	210	3000	
995450004	10/6/1999	40 22 46.0	-86 56 4.0	Rock Bass	194	160	< -1	< -1	< -1	< -1	170	180	51	400	
995450005	10/6/1999	40 22 46.0	-86 56 4.0	Smallmouth Bass	248	174	< -1	< -1	< -1	< -1	670	890	200	1800	
995450003	10/6/1999	40 22 46.0	-86 56 4.0	Northern Hog Sucker	294	268	< -1	< -1	< -1	< -1	260	360	93	710	
995450006	10/6/1999	40 22 46.0	-86 56 4.0	Smallmouth Bass	331	515	< -1	< -1	< -1	< -1	950	1000	220	2200	
995450007	10/6/1999	40 22 46.0	-86 56 4.0	Smallmouth Bass	391	804	< -1	< -1	< -1	< -1	290	480	130	900	
AA22989-054-01	7/14/2004	40 22 46.0	-86 56 4.0	River Chub	156	46	< -1	< -1	< -1	< -1	1300	773	164	2230	
AA22989-156-01	7/14/2004	40 22 46.0	-86 56 4.0	Rock Bass	149	60	< -1	< -1	< -1	< -1	339	432	66.3	837	
AA22989-167-01	7/14/2004	40 22 46.0	-86 56 4.0	Smallmouth Bass	310	361	< -1	< -1	< -1	< -1	338	553	115	1000	
AA22989-110-01	7/14/2004	40 22 46.0	-86 56 4.0	Black Redhorse	343	387	< -1	< -1	< -1	< -1	693	563	69.6	1330	
AA22989-121-01	7/14/2004	40 22 46.0	-86 56 4.0	Channel Catfish	435	797	< -1	< -1	< -1	< -1	1630	3500	907	6040	
AA22989-205-01	7/14/2004	40 22 46.0	-86 56 4.0	Freshwater Drum	465	1417	< -1	< -1	< -1	< -1	141	119	23.3	284	
AA22989-121-02	7/14/2004	40 22 46.0	-86 56 4.0	Channel Catfish	563	1928	< -1	< -1	< -1	< -1	1680	5160	1620	8450	
AA56395-110-01	7/27/2009	40 22 46.0	-86 56 4.0	Black Redhorse	343	379	39.1	39.1	39.1	39.1	402	427	63.9	893	
AA56395-167-02	7/27/2009	40 22 46.0	-86 56 4.0	Smallmouth Bass	314	381	19.6	19.6	19.6	19.6	218	218	57.3	493	
AA56395-205-01	7/27/2009	40 22 46.0	-86 56 4.0	Freshwater Drum	365	624	19.6	19.6	19.6	19.6	90.8	62.2	19.6	153	
AA56395-167-01	7/27/2009	40 22 46.0	-86 56 4.0	Smallmouth Bass	416	1077	19.6	19.6	19.6	19.6	170	171	67.1	408	
AB15506-054-01	9/15/2014	40 22 46.0	-86 56 4.0	River Chub	154	48	< -1	< -1	< -1	< -1	978	639	137	1750	
AB15506-158-01	9/15/2014	40 22 46.0	-86 56 4.0	Green Sunfish	131	49	< -1	< -1	< -1	< -1	731	611	136	1480	
AB15506-156-01	9/15/2014	40 22 46.0	-86 56 4.0	Rock Bass	136	54	< -1	< -1	< -1	< -1	158	129	20.7	308	
AB15506-163-01	9/15/2014	40 22 46.0	-86 56 4.0	Longear Sunfish	128	57	< -1	< -1	< -1	< -1	148	135	22.7	306	
AB15506-167-03	9/15/2014	40 22 46.0	-86 56 4.0	Smallmouth Bass	253	229	< -1	< -1	< -1	< -1	439	351	89.1	879	
AB15506-101-02	9/15/2014	40 22 46.0	-86 56 4.0	White Sucker	294	272	< -1	< -1	< -1	< -1	382	210	38.8	630	
AB15506-167-02	9/15/2014	40 22 46.0	-86 56 4.0	Smallmouth Bass	311	448	< -1	< -1	< -1	< -1	181	158	29.9	369	
AB15506-101-01	9/15/2014	40 22 46.0	-86 56 4.0	White Sucker	396	674	< -1	< -1	< -1	< -1	264	190	28.6	483	
AB15506-167-01	9/15/2014	40 22 46.0	-86 56 4.0	Smallmouth Bass	405	992	< -1	< -1	< -1	< -1	392	442	74.9	909	
AB35749-158-01	9/17/2019	40 22 46.0	-86 56 4.0	Green Sunfish	117	32	< -1	< -1	< -1	< -1	65.4	61.2	13.8	140	
AB35749-054-01	9/17/2019	40 22 46.0	-86 56 4.0	River Chub	144	35	< -1	< -1	< -1	< -1	227	243	57.9	529	
AB35749-156-01	9/17/2019	40 22 46.0	-86 56 4.0	Rock Bass	152	72	< -1	< -1	< -1	< -1	75.5	78.9	21	175	
AB35749-110-01	9/17/2019	40 22 46.0	-86 56 4.0	Black Redhorse	307	275	< -1	< -1	< -1	< -1	238	177	23.8	439	

Elliott Ditch and Wea Creek, Lafayette, Indiana
Watershed Assessment and Planning Branch
Fish Tissue Sampling Results
Provided Results From 1983 - 2019

Fish Sample	Sample Date	Latitude	Longitude	Fish	Length (mm)	Weight (g)								Total PCBs (ug/Kg)	
							Aroclor-1016 (ug/Kg)	Aroclor-1221 (ug/Kg)	Aroclor-1232 (ug/Kg)	Aroclor-1242 (ug/Kg)	Aroclor-1248 (ug/Kg)	Aroclor-1254 (ug/Kg)	Aroclor-1260 (ug/Kg)		
Location 3															
AA25629-111-01	8/16/1983	40 21 38.8	-86 54 35.4	Golden Redhorse	355	326									2.12
995451012	10/6/1999	40 21 38.8	-86 54 35.4	River Chub	163	49	< -1	< -1	< -1	< -1	< -1	73	39	110	
995451010	10/6/1999	40 21 38.8	-86 54 35.4	Northern Hog Sucker	282	236	< -1	< -1	< -1	< -1	< -1	43	18	61	
995451009	10/6/1999	40 21 38.8	-86 54 35.4	Smallmouth Bass	289	293	< -1	< -1	< -1	< -1	< -1	260	74	330	
995451008	10/6/1999	40 21 38.8	-86 54 35.4	Smallmouth Bass	343	534	< -1	< -1	< -1	< -1	< -1	370	120	490	
995451011	10/6/1999	40 21 38.8	-86 54 35.4	Black Redhorse	396	621	< -1	< -1	< -1	< -1	< -1	33	< -1	33	
AA22988-092-01	7/14/2004	40 21 38.8	-86 54 35.4	Striped Shiner	136	33	< -1	< -1	< -1	< -1	1070	1290	143	2500	
AA22988-054-01	7/14/2004	40 21 38.8	-86 54 35.4	River Chub	157	55	< -1	< -1	< -1	< -1	465	349	94.4	908	
AA22988-167-01	7/14/2004	40 21 38.8	-86 54 35.4	Smallmouth Bass	211	125	< -1	< -1	< -1	< -1	< -1	66.6	18	84.6	
AA22988-156-01	7/14/2004	40 21 38.8	-86 54 35.4	Rock Bass	179	129	< -1	< -1	< -1	< -1	83.8	118	20.9	223	
AA22988-110-01	7/14/2004	40 21 38.8	-86 54 35.4	Black Redhorse	316	323	< -1	< -1	< -1	< -1	27.3	28.4	< -1	55.7	
AA22988-121-01	7/14/2004	40 21 38.8	-86 54 35.4	Channel Catfish	516	1304	< -1	< -1	< -1	< -1	< -1	18.6	< -1	18.6	
AB15505-077-01	7/14/2014	40 21 38.8	-86 54 35.4	Central Stoneroller	123	26	< -1	< -1	< -1	< -1	33.8	32.9	< -1	66.7	
AB15505-106-01	7/14/2014	40 21 38.8	-86 54 35.4	Western Creek Chubs	166	59	< -1	< -1	< -1	< -1	< -1	< -1	< -1	< -1	
AB15505-156-01	7/14/2014	40 21 38.8	-86 54 35.4	Rock Bass	157	76	< -1	< -1	< -1	< -1	< -1	< -1	< -1	< -1	
AB15505-167-01	7/14/2014	40 21 38.8	-86 54 35.4	Smallmouth Bass	227	150									
AB35747-158-01	9/17/2019	40 21 38.8	-86 54 35.4	Green Sunfish	116	32	< -1	< -1	< -1	< -1	< -1	37.8	< -1	37.8	
AB35747-156-01	9/17/2019	40 21 38.8	-86 54 35.4	Rock Bass	122	38	< -1	< -1	< -1	< -1	< -1	30.5	12.8	43.3	
AB35747-101-01	9/17/2019	40 21 38.8	-86 54 35.4	White Sucker	239	133	< -1	< -1	< -1	< -1	40	45.8	< -1	85.8	
AB35747-110-01	9/17/2019	40 21 38.8	-86 54 35.4	Black Redhorse	355	473	< -1	< -1	< -1	< -1	26.2	23.7	< -1	49.9	
30900825	8/11/1993	40 21 39.0	-86 54 35.5	Northern Hog Sucker	256	198				102		214		310	
30900824	8/11/1993	40 21 39.0	-86 54 35.5	Black Redhorse	357	442				228		588	118	940	
AA56394-156-01	8/10/2009	40 21 39.0	-86 54 34.0	Rock Bass	180	136	19.6	19.6	19.6	19.6	70.3	101	22.4	194	
AA56394-110-01	8/10/2009	40 21 39.0	-86 54 34.0	Black Redhorse	255	181	19.6	19.6	19.6	19.6	35.3	23.4	19.6	58.7	
AA56394-167-01	8/10/2009	40 21 39.0	-86 54 34.0	Smallmouth Bass	335	489	19.6	19.6	19.6	19.6	76.5	166	49.9	292	
AA56394-121-01	8/10/2009	40 21 39.0	-86 54 34.0	Channel Catfish	411	737	39.1	39.1	39.1	39.1	121	258	85.2	464	

Elliott Ditch and Wea Creek, Lafayette, Indiana
Watershed Assessment and Planning Branch
Fish Tissue Sampling Results
Provided Results From 1983 - 2019

Fish Sample	Sample Date	Latitude	Longitude	Fish	Length (mm)	Weight (g)								Total PCBs (ug/Kg)
							Aroclor-1016 (ug/Kg)	Aroclor-1221 (ug/Kg)	Aroclor-1232 (ug/Kg)	Aroclor-1242 (ug/Kg)	Aroclor-1248 (ug/Kg)	Aroclor-1254 (ug/Kg)	Aroclor-1260 (ug/Kg)	
Location 4														
30900798	8/10/1993	40 22 16.0	-86 53 6.0	Creek Chub	190	90					16864	8928		26000
995450014	10/1/1999	40 22 16.0	-86 53 5.0	White Sucker	130	25	< -1	< -1	< -1	< -1	3700	3000	390	7100
995450017	10/1/1999	40 22 16.0	-86 53 5.0	Bluegill	122	34	< -1	< -1	< -1	< -1	4400	2700	280	7400
995450018	10/1/1999	40 22 16.0	-86 53 5.0	Green Sunfish	123	37	< -1	< -1	< -1	< -1	9500	7900	1100	19000
995450016	10/1/1999	40 22 16.0	-86 53 5.0	Creek Chub	162	50	< -1	< -1	< -1	< -1	16000	12000	1400	29000
995450015	10/1/1999	40 22 16.0	-86 53 5.0	Creek Chub	199	97	< -1	< -1	< -1	< -1	17000	14000	1600	33000
995450013	10/1/1999	40 22 16.0	-86 53 5.0	White Sucker	269	222	< -1	< -1	< -1	< -1	4300	2700	340	7300
AA22986-051-02	7/13/2004	40 22 16.0	-86 53 5.0	Creek Chub	137	32	< -1	< -1	< -1	< -1	16500	16700	1290	34500
AA22986-158-01	7/13/2004	40 22 16.0	-86 53 5.0	Green Sunfish	117	39	< -1	< -1	< -1	< -1	8000	8820	766	17600
AA22986-044-01	7/13/2004	40 22 16.0	-86 53 5.0	Goldfish	158	66	< -1	< -1	< -1	< -1	2700	1840	389	4930
AA22986-051-01	7/13/2004	40 22 16.0	-86 53 5.0	Creek Chub	185	85	< -1	< -1	< -1	< -1	12800	14300	1260	28400
AA56392-158-01	7/29/2009	40 22 16.0	-86 53 5.0	Green Sunfish	79	10	391	391	391	391	3450	1880	391	5330
AA56392-051-01	7/29/2009	40 22 16.0	-86 53 5.0	Creek Chub	175	64	978	978	978	978	10000	6050	978	16100
AA56392-101-01	7/29/2009	40 22 16.0	-86 53 5.0	White Sucker	189	70	294	294	294	294	3540	1500	294	5040
AA56392-101-02	7/29/2009	40 22 16.0	-86 53 5.0	White Sucker	264	212	391	391	391	391	5310	2340	391	7650
AB15493-101-01	7/14/2014	40 22 16.0	-86 53 5.0	White Sucker	171	63	< -1	< -1	< -1	< -1	1940	1190	89.1	3220
AB15493-051-01	7/14/2014	40 22 16.0	-86 53 5.0	Creek Chub	187	84	< -1	< -1	< -1	< -1	6160	5350	491	12000
AB15493-132-01	7/14/2014	40 22 16.0	-86 53 5.0	Yellow Bullhead	222	164	< -1	< -1	< -1	< -1	600	512	63.9	1180
AB15493-101-02	7/14/2014	40 22 16.0	-86 53 5.0	White Sucker	269	243	< -1	< -1	< -1	< -1	569	396	41.6	1010
AB35748-158-01	7/30/2019	40 22 16.0	-86 53 5.0	Green Sunfish	112	36	< -1	< -1	< -1	< -1	1520	1450	143	3120
AB35748-051-01	7/30/2019	40 22 16.0	-86 53 5.0	Creek Chub	164	56	< -1	< -1	< -1	< -1	2750	2690	262	5700
AB35748-101-01	7/30/2019	40 22 16.0	-86 53 5.0	White Sucker	282	273	< -1	< -1	< -1	< -1	410	321	46.3	777
AA25611-051-02	8/16/1983	40 22 16.0	-86 53 5.0	Creek Chub	--	--								118
Location 5														
30900796	8/10/1993	40 22 55.0	-86 51 27.0	Creek Chub	178	68					1041	1196	243	2200
Location 6														
AA25612-051-02	8/16/1983	40 22 56.0	-86 51 21.0	Creek Chub	--	--								1.586
995451018	10/1/1999	40 22 56.0	-86 51 21.0	Green Sunfish	102	16	< -1	< -1	< -1	< -1	340	400	68	810
995451017	10/1/1999	40 22 56.0	-86 51 21.0	White Sucker	120	16	< -1	< -1	< -1	< -1	890	690	110	1700
995451020	10/1/1999	40 22 56.0	-86 51 21.0	Creek Chub	127	21	< -1	< -1	< -1	< -1	< -1	74	27	100
995451019	10/1/1999	40 22 56.0	-86 51 21.0	Creek Chub	171	42	< -1	< -1	< -1	< -1	< -1	63	28	91
AA22987-077-01	7/13/2004	40 22 56.0	-86 51 21.0	Central Stoneroller	106	16	< -1	< -1	< -1	< -1	2320	2770	477	5560
AA22987-158-01	7/13/2004	40 22 56.0	-86 51 21.0	Green Sunfish	98	23	< -1	< -1	< -1	< -1	1570	2350	218	4140
AA22987-051-01	7/13/2004	40 22 56.0	-86 51 21.0	Creek Chub	125	28	< -1	< -1	< -1	< -1	400	436	53.2	890
AA22987-101-02	7/13/2004	40 22 56.0	-86 51 21.0	White Sucker	183	80	< -1	< -1	< -1	< -1	2060	1480	222	3760
AA22987-101-01	7/13/2004	40 22 56.0	-86 51 21.0	White Sucker	223	153	< -1	< -1	< -1	< -1	462	453	51.9	966
AA56393-158-01	7/28/2009	40 22 56.0	-86 51 21.0	Green Sunfish	99	18	19.6	19.6	19.6	19.6	54.1	44.4	19.6	98.6
AA56393-051-01	7/28/2009	40 22 56.0	-86 51 21.0	Creek Chub	141	31	58.7	58.7	58.7	58.7	411	327	58.7	738
AB15494-051-01	7/14/2014	40 22 56.0	-86 51 21.0	Creek Chub	102	15	< -1	< -1	< -1	< -1	142	97.9	20.9	261
AB15494-158-01	7/14/2014	40 22 56.0	-86 51 21.0	Green Sunfish	91	18	< -1	< -1	< -1	< -1	276	195	25	497
AB15494-051-02	7/14/2014	40 22 56.0	-86 51 21.0	Creek Chub	135	34	< -1	< -1	< -1	< -1	188	279	36.7	503
AB15494-101-01	7/14/2014	40 22 56.0	-86 51 21.0	White Sucker	146	37	< -1	< -1	< -1	< -1	283	173	20.2	476
AB35750-158-01	7/30/2019	40 22 56.0	-86 51 21.0	Green Sunfish	82	13	< -1	< -1	< -1	< -1	57.8	93.7	22.9	174
AB35750-051-01	7/30/2019	40 22 56.0	-86 51 21.0	Creek Chub	147	39	< -1	< -1	< -1	< -1	22.2	30.8	12.7	65.7