



# Elliott Ditch Project Update

Date: January 8, 2024

Subject: Elliott Ditch Project Update No. 56

CEC Project No.: 315-052

---

On behalf of Arconic US, LLC (Arconic), Civil & Environmental Consultants, Inc. (CEC) is pleased to provide this status update regarding the Elliott Ditch Project. Project status updates will be provided weekly during clean-up activities and quarterly during non-clean-up activities, at a minimum. These updates will be posted on the updates section of the Elliott Ditch Project Website (<http://elliottditchproject.cecinc.com/updates.aspx>).

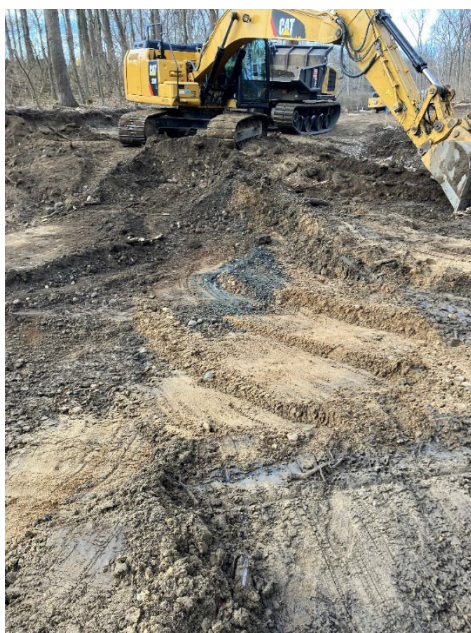
## **Reach 5 & 6 Isolated Soil Remediation Project**

- Reach 5 & 6 Interim Measures (IM) activities are being performed by Arconic's remedial contractor, O6 Environmental, LLC (O6ENV).
- Through December 21, 2023, approximately 8,900 tons of PCB impacted soil has been disposed of at Republic's Walnut Creek disposal facility (from Reach 5).
- Confirmation samples are being collected in accordance with the IM Work Plan. Samples have been submitted to Waypoint Analytical in Memphis, Tennessee. Sampling activities will continue the week of January 8, 2024, ahead of additional excavation activities.
- Erosion control devices have been installed by O6ENV and are being inspected in accordance with the Construction General Stormwater Permit.
- Once acceptable sample results are achieved, O6ENV will restore the disturbed areas. Restoration will include backfilling, topsoil placement, reseeding, and tree planting (where appropriate).
- A Post Construction Report (PCR) will be prepared and submitted to the United States Environmental Protection Agency, Region 5, and the Indiana Department of Environmental Management following the completion of project activities. Following regulatory submittal, the PCR will be uploaded to the repository located on the project website.

Should you have questions, please call the Elliott Ditch Hotline at 317-613-4514, or send an email to [elliottditchquestions@gmail.com](mailto:elliottditchquestions@gmail.com).



Photograph 1: Excavation bottom being prepared for sampling.



Photograph 2: Active excavation.